

# Paramount BROWNS'

## INDUSTRIAL CONCRETE MIXER 2.2CU/FT 65 LITRE

Part Number	CMI22EAF
Drum mouth	380mm
Mixed Wet	60 Litre
Unmixed Dry	85 Litre
Gross Drum Volume	110 Litre
Voltage	230-240V (50HZ)
Motor	550 Watt
Wheels	330mm Puncture Proof
Weight	76kg

## INSTRUCTION MANUAL



## **CAUTION**

Never start the mixer loaded, always load mixer rotating.

Always wear Personal Protection Equipment when operating.

Recommend that you only use extension cords appropriate for outdoor use.

Power supply should be protected by an approved RCD protection device.

## **Cleaning**

- After each mix, it is advisable to clear any build up of cement from the mixing arms inside the drum. If left to dry, the cement can be extremely difficult to remove without damage to the drum.
- After the last mix it is advisable to wash and clean all cement build up from both inside and outside the drum, before the cement fully sets. Avoid hitting the drum with any objects and pay particular attention to build up of cement around the lip of the drum.
- After cleaning the drum, the cement mixer should be stored in the downwards position to ensure all water is drained from the drum.

## **General Inspection**

- Regularly check that all the fixing screws are tight. They may vibrate loose over time.
- Ensure tyres are inflated equally.
- Inspect the cordset and plug for any signs of damage and have any repairs performed before use by an authorized Service Centre.
- Ensure to inspect any extension cables for damage before use with this appliance.

**Caution:** Due to the size and weights of some of the components used in this machine.  
**We recommend that 2 people only attempt assembly.**

## ASSEMBLY INSTRUCTIONS

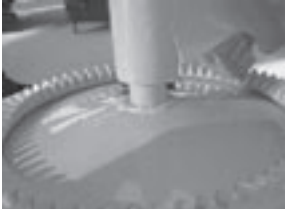
**1)** Align the 3 mixer chassis components consisting of a horizontal lifting bar, axle assembly and vertical drum/drive support. Bolt the 3 components securely together using the appropriate hex nuts bolts flat and locking washers.

**2)** Slide the 2 wheels and flat washers onto each wheel axle (ensure the valve for tyre inflation face outwards). Slide a split pin into each hole at the end of the axle and bend to secure each wheel.

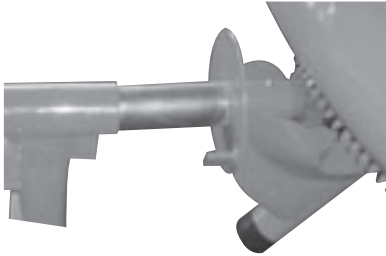
**3)** Main drive/drum support unit. This should now be fitted into the drum.

**4)** The spacing between the gears should be approx 1-1.5mm. This can be adjusted using the spacing washers provided. The spacing should be enough that the gear engages optimally, but doesn't effect the smooth engagement of the gears.





**5)**When this is complete, align the holes of the drive and drum and fit securely with the high tensile nut and bolt.

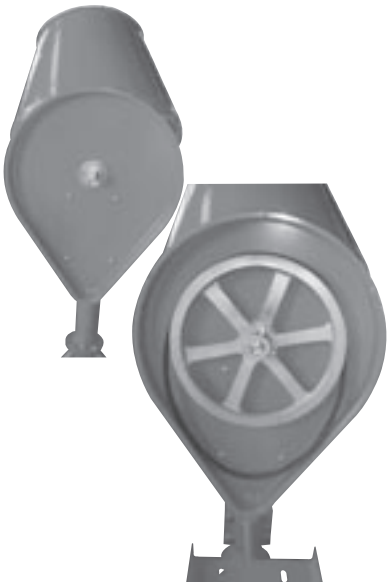


**6)** Lightly oil the male bush. On the drum and drive. Same with the female bush on the chassis.

**7)** Lift (2 people) the now assembled drive and drum into the bushing located at the top of the chassis.



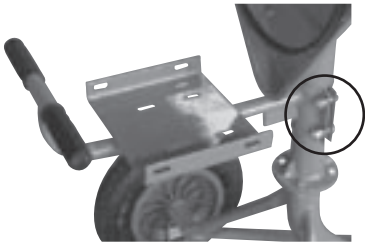
**8)** Fit the pulley cover to the drive end of the mixer and fix to the securing brackets with the screws and nuts provided. Fit the large washer over the drive shaft together with the securing circlip.



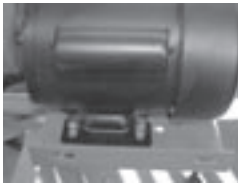
**9)** Fit key into keyway and slide main drive pulley onto shaft.



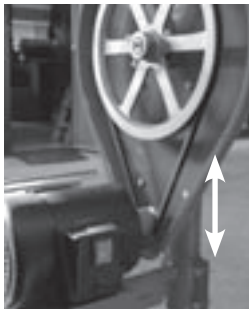
**10)** Align the two holes on handles (#39) with holes on drum support, and affix with hex bolts (#7), flat washers (#4) and spring washer (#5), then tighten it with nut(#6). Same installation as other handle.



**11)** Put motor stand (#12) to vertical support, align the four holes on the lock plate (#54), then affix it with hex bolts(#11), flat washer (#4), spring washer (#5) and hex bolt (#6). Do not tighten nuts until the motor (#17) is fixed and the tension of the belt is properly adjusted.



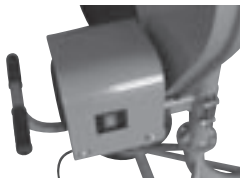
**12)** Place motor (#17) onto Motor stand (#12) fix with four hex bolts (#18), flat washers (#13) between bolts and motor, then flat washer (#13) and spring washer (#14) on bottom of motor stand, tighten it with nuts (#15). Do not tighten nuts until the pulley and motor pulley (are parallel).



**13)** Attach the drive belt(s) to both the main drive and motor pulleys. Align by adjusting both the fan (on the shaft) or the motor (on the stand) to ensure they are as parallel as possible. Failure to do this will result in uneven drive belt wear and premature bearing failure.



**14)** Attach outer pulley cover (#24) with seven cross head bolts (#36),flat washers (#33), spring washers (#34) and nuts (#35), tighten them.



**15)** Attach motor cover with four hex bolts (#20), flat washer (#21) between bolts and motor cover then the other side with flat washer (#21), spring washers (#22) and hex nuts, tighten. Finally, lock all necessary bolts and nuts, the mixer is ready for operation now.

## PART LIST for MIX-TM-2.2

NO.	Name	DESCRIPTION	QUANTITY
1	Floor support assembly		1
2	Vertical support assembly		1
3	wheel axle		1
4	flat washer	_10	16
5	spring washer	_10	16
6	hex nut	M10	16
7	hex bolt	M10*25	12
8	wheel	3.25-8	2
9	wheel stop washer	_16	2
10	split pin	_3*30	2
11	hex bolt	M10*35	4
12	motor stand		1
13	flat washer	_8	16
14	spring washer	_8	14
15	hex nut	M8	8
16	handle cover		4
17	motor		1
18	hex bolt	M8*20	8
19	motor cover		1
20	hex bolt	M6*20	4
21	flat washer	_6	8
22	spring washer	_6	4
23	hex nut	M6	4
24	pulley outer cover		1
25	motor pulley		1
26	pulley inside cover		1
27	hex bolt	M8*20	1
28	belt pulley		1
29	hex bolt	M8*20	2
30	split pin	_5*35	1
31	stop washer		1
32	belt	A 1150	1
33	flat washer	_5	7
34	spring washer	_5	7
35	hex nut	M5	7
36	cross head bolt	M5*12	7
37	oil cup		3
38	bearing	6005-2RS	2
39	handle		2
40	drum support assembly		1
41	umbelliform gear shaft		1
42	adjust washer		1
43	gear ring		1
44	spring iron pin	_8*40	1
45	drum assembly		1
46	hex bolt	M8*20	6
47	leather gasket		6
48	flat washer	_8	6
49	drum shaft		1
50	bearing	6205-2RS	2
51	stop washer		1
52	split pin	_6*35	1
53	dust proof cap		1
54	lock plate		1
55	handle cover		1

